

SPEC SHEET + MEASUREMENTS

PORT AUTHORITY.

Port Authority® Hybrid Soft Shell Jacket. J787

Product photo



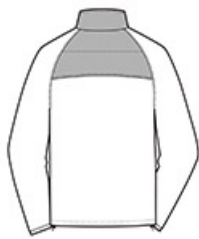
Quilted front and back panels join a wind-resistant, water-resistant soft shell to make the Hybrid a trend-right stretch performance jacket with urban edge.

- 100% polyester knit shell bonded to a water-resistant film insert and a 100% polyester microfleece lining
- 100% nylon woven overlays
- 1000MM fabric waterproof rating
- 1000G/M² fabric breathability rating
- Interior storm flap with chin guard
- Reverse coil zippers
- Zippered right chest pocket
- Front zippered pockets
- Port Pocket™ for decoration access
- Binding at cuffs
- Open hem with adjustable locking drawcords

Sketches



front



back

CARE INSTRUCTIONS

Machine wash cold with like colors. Do not bleach or use fabric softener. Tumble dry low. Remove promptly. Do not iron. Do not dry clean.

SPEC SHEET + MEASUREMENTS

PORT AUTHORITY

Port Authority® Hybrid Soft Shell Jacket. J787

PRODUCT MEASUREMENTS

	XS	S	M	L	XL	2XL	3XL	4XL
Chest	19 1/2	21	22 1/2	24	25 1/2	27	29	31
Body Length at Back	26	27	28	29	30	31	31 1/2	32
Sleeve Length from Center Back	34 3/4	35 1/2	36 1/4	37	37 3/4	38 1/2	39 1/4	40

Chest: Measured across the chest one inch below armhole when laid flat.

Body Length at Back: Measured from high point shoulder to finished hem at back.

Sleeve Length from Center Back: Measure from Center Back neck to shoulder point to sleeve hem.

SIZE CHARTS

	XS	S	M	L	XL	2XL	3XL	4XL
Chest	32-34	35-37	38-40	41-43	44-46	47-49	50-53	54-57

SPEC SHEET + MEASUREMENTS

PORT AUTHORITY.

Port Authority® Hybrid Soft Shell Jacket. J787

HOW TO MEASURE



CHEST

Measure under the arm and around the fullest part of the chest with arms down, keeping tape horizontal.

COLORS



Deep Black
PMS BLACK
C



Smoke Grey/
Grey Steel
PMS Cool
Grey 11 C